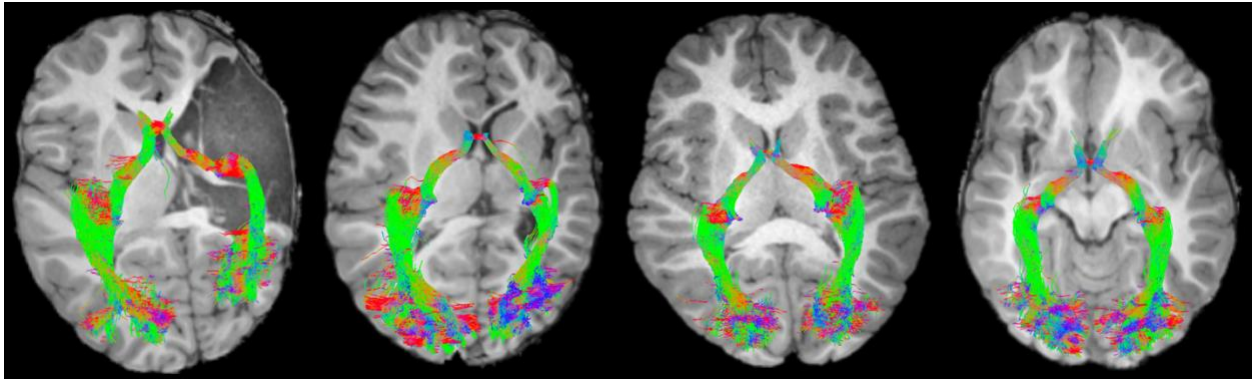
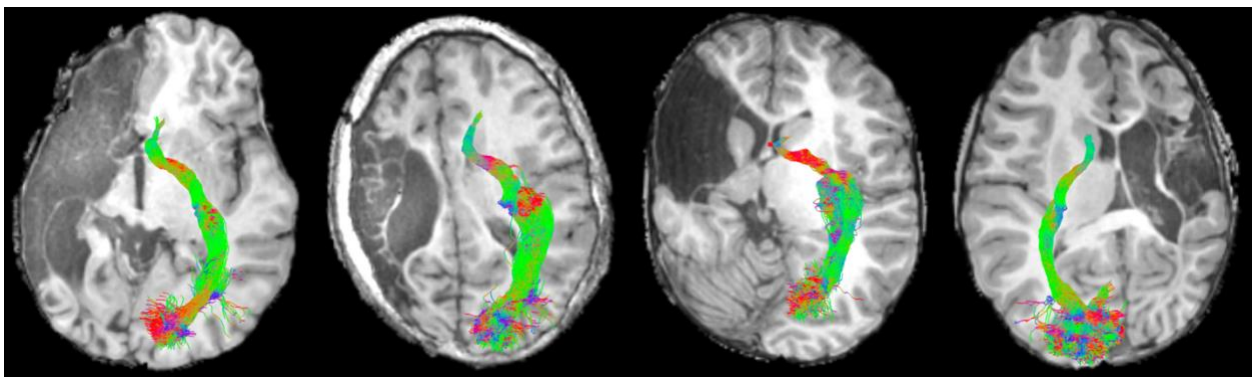


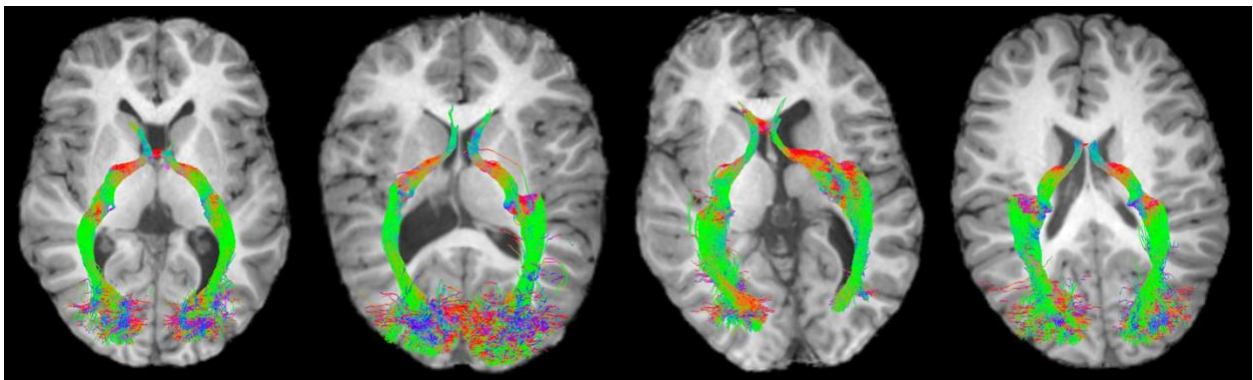
Supplementary material – Examples of successfully and unsuccessfully generated tracts



Supplementary figure 1: Four examples of children with arterial ischemic stroke (AIS). Tracts were generated in both hemispheres using two regions of interest as described in the methods.



Supplementary figure 2: Four examples of children with AIS, whose tracts were only able to be successfully generated in the non-lesioned hemisphere using the two regions of interest in pre-determined locations.



Supplementary figure 3: Four examples of children with periventricular venous infarction (PVI). Tracts were successfully generated in the lesioned and non-lesioned hemispheres using only two regions of interest in pre-determined locations.